

MAGAZINE

NUMBER 5 / 2005-2006

CONVECTAIR

\$ 2.95

Comfort and
Savings
you'll Love



www.convectair.com

Editorial

We're the largest consumers of energy per capita in the world. Understandably. We have an abundance of gas, oil and electricity, and we have significant needs. Our winters are cold, our summers are hot, and the distances are great. But there are ways that we can reduce our energy consumption and still increase our comfort.

It's often when traveling abroad that North Americans notice the wide gap separating our own energy habits from those of other nations. Turning off the lights when leaving a room, cutting off the heat to unused rooms, driving smaller cars: all these customs can seem curious to us. Supply conditions and the cost of energy have even led some countries to impose performance standards for heating equipment. In France, for example, these standards apply to thermostat precision, heater design, the uniformity of indoor temperatures no matter what the conditions outdoors, and the use of different types of heating depending on the room.

In the 1970s, the rapid rise in energy costs forced us to take a closer look at our habits. But it seems the shock wasn't great enough. Big cars are back in style, and the most popular heating systems have barely evolved. Nearly thirty years later, our past is catching up with us.

Today's consumers want to know more. They want to be assured that the product they're buying will be the most efficient and most effective product for their needs. But they don't want to sacrifice comfort or quality of life.

For more than 20 years, we've drawn on our experience in Europe to insist that all Convectair products surpass the performance standards set by countries where energy is twice or three times the price we pay here. Of course this entails selling products that cost more than a baseboard or forced-air heater. But our clients have become increasingly demanding, and with good reason.

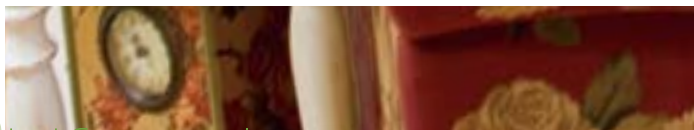
This challenge is always on our minds. It forces us to continue to develop and improve our products. The new Allegro line and the much-awaited return of the Boléro announce the beginning of a new generation: one of better-performing, more intelligent heaters.

Try them—and see for yourself!

Jean Marie Falquet
President and CEO

Contents

3



Lifestyles



Special
spaces

8

15

Bare warmth



The
web site

22

23

The ABCs
of Convectair

The
Convectair
Line



26

Technical
Specifications

Lifestyles



Designing your comfort zone

What is comfort?

Comfort often comes to mind when it's absent—when you're uncomfortable. In terms of heating, you're comfortable when your body heat and the room temperature reach an equilibrium. Then you can focus on what you're doing. This point of equilibrium differs from one person to the next. It also depends on your level of activity. For instance, watching TV, studying, exercising or sleeping all imply different comfort requirements. From choosing the best heaters for your home to determining their ideal settings, Convectair offers you made-to-measure heating solutions, where savings and comfort go hand in hand.

Allegro Duo, radiant and natural convection unit, 1000 W, white

What type of heater should I choose?

Your home may have an open-concept layout or it may feature many separate rooms. It may include a solarium, an indoor pool, a home office or a games room. At Convectair, we believe there are as many ways to devise a proper heating plan as there are styles of home.

The natural convection heater

A natural convection unit slowly and constantly circulates the entire air mass of a room, heating every cubic inch of air. Each Convectair unit features a built-in electronic thermostat sensor set 4 inches (10 cm) from the floor. The cold air detected by this sensor rises into the unit and comes in contact with the heating element. As the air warms, it gains momentum and exits the top of the heater. The slanted louvers of the grille force the warm air toward the center of the room. The air turns into gentle, even heat from floor to ceiling—for head-to-toe comfort.

This controlled and complete air circulation cycle prevents the “cushion” of warm air that occurs with a wall thermostat. Since it is installed at a height of 5 feet (1,5 m), the wall thermostat

reacts when air at this height becomes colder. As soon as the warm air that accumulates below the ceiling reaches the wall thermostat, the heat is cut off. And yet the air remains cold at floor level. A wall thermostat—even an electronic one—will never give an accurate reading of the floor-level temperature, so the floor will always be colder than the thermostat temperature.

The radiant heater

The radiant heater distributes the same amount of heat as its convection counterpart, but in a different way. It warms everything within its scope: walls and floors, furniture, living beings. The closer you move to the radiant heater, the more you feel its enveloping heat, similar to that of the sun. This type of heater makes an ideal choice in any space where people are inactive: near the TV, around sofas, or in the bathroom. Anyone who is particularly sensitive to the cold usually prefers radiant heat.

The fan-forced heater

A well designed fan-forced heater produces heat as needed. When strategically placed, it will quickly deliver heat to adequately warm an area where you want to feel cozy. The timer allows you to bolster your heating for as long as you like.

At Convectair, we don't believe in oversized heaters; we believe you need a heating system that is tailored to your needs and your lifestyle.

Share the warmth

No matter what the style of their home, families tend to gather in one particular room—living room, family room, games room or home theater. Since this room is often the largest in the house, it may require the use of several heaters. In this case, you can easily combine different types of heat. In spaces where you move about little and therefore feel the cold more, a radiant heater is the obvious choice. A natural convection unit will complement the radiant heater by continuously warming the entire air mass. This combination will allow you to get the most out of your heating budget while enjoying complete comfort.

Alto, natural convection unit, 1000 W, white



Why heat the furniture?

Often, the sofa ends up in front of a long baseboard heater beneath the bay window. Constrained by architectural considerations, homeowners tend to place all sorts of furniture

over or in front of hot air vents, which inevitably results in a lack of comfort. The heating system works overtime yet the room still feels cold.

That's why Convectair came up with the Opera. Available in two sizes and outputs, this vertical unit distributes radiant heat from the corner of the room. And the Opera blends in discreetly

with any decor. Because of the model's elongated shape, the heat fans out into the room. This efficient use of energy means that all the warmth is directed toward the center of the room, not lost through the outside wall or heating only the back of your sofa.

Opera, radiant unit, 1250 W, greige





Alto, natural convection unit, 2000 W, white

Good food and long meals

Socializing with family and friends often revolves around a meal, so a warm, welcoming kitchen is a must.

A snug atmosphere

Cabinets on every wall, a table for chopping and slicing, a lunch counter and stools for serving the kids: sometimes a kitchen simply leaves no space for a heater. This problem is easily resolved with Convectair, because this unit does not have to be installed next to a window. In fact, a Convectair can be slipped into almost any space, as long as it allows air to circulate freely. Lost wall space, the end of a counter, the side of a cupboard, the breakfast nook—even a narrow corner will do. The possibilities for bringing warmth and comfort into the kitchen are endless.

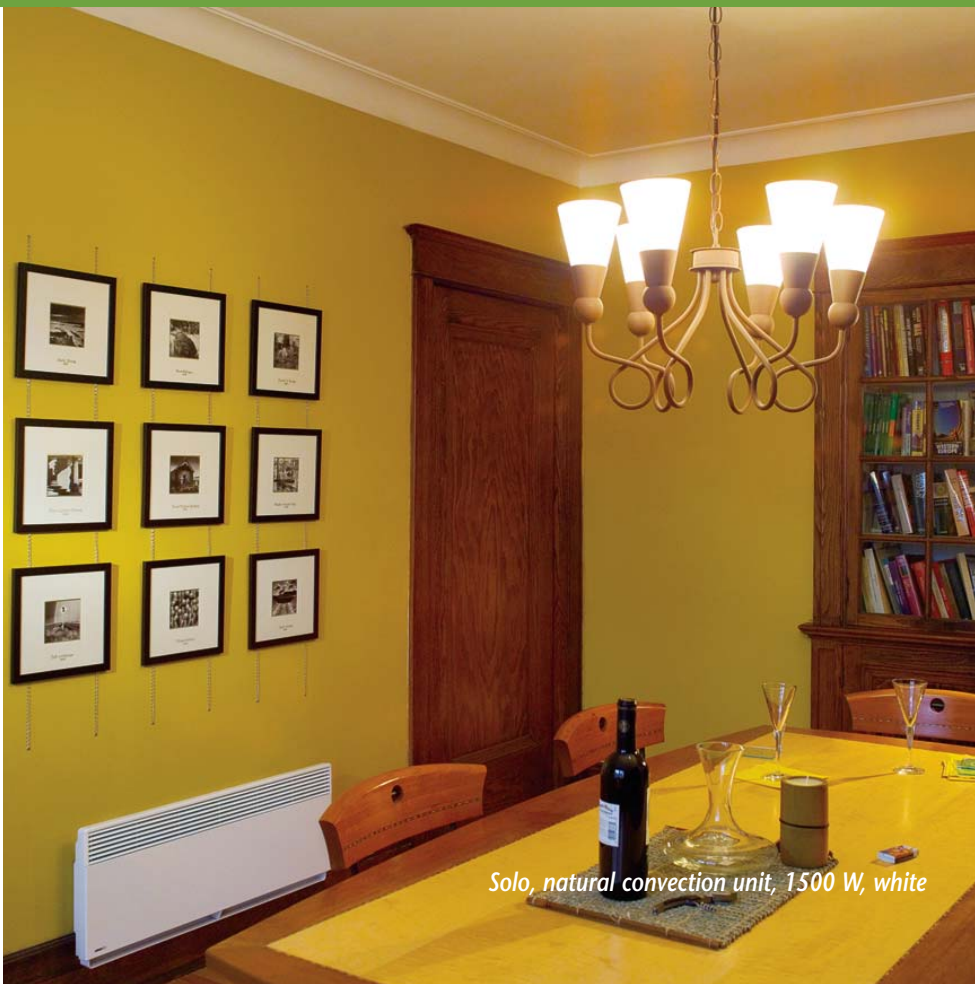
Convection or radiant?

Many homeowners prefer natural convection in the kitchen because it heats the room evenly throughout. This type of heat is ideal when you're busy cooking: the only hot spot in the room will be the oven. When it comes to the dining room, though, opinion is divided. Some families opt for the stable, pleasant environment created by natural convection. Others choose radiant heat because they perceive the cold more when seated around the table. No matter which system you choose, everyone will feel comfortable enough to relax and savor their meal.

Myth or reality?

"If you need 1000 watts in your living room, then install a 2000-watt heater. You'll have peace of mind and there's no danger of overheating."

Sure! And you can rent a moving truck the next time you pick up a loaf of bread. If its heating requirements are properly calculated, the room will be adequately heated and comfortable, with no waste of energy.



Solo, natural convection unit, 1500 W, white



*Apéro (120 V), natural convection unit,
500 W, mimetic white*

In the land of nod

We spend one third of our lives in bed, storing up the energy we need to live life to the fullest during the other two thirds. Made-to-measure comfort in your bedroom is therefore a must.

Sleep and save

For many people, Convectair's natural convection heaters will guarantee a perfect night's sleep. These units function in complete silence. They need no motor, no turbine and no fan. The air circulates slowly and constantly, without drying out the room's atmosphere, so that you breathe easily while you sleep. Moreover, you can program any Alto, Mezzo, Solo or Allegro model to automatically lower the temperature—so you can enjoy deep, restorative sleep. In the morning, the heater wakes up before you do, and warms the room without making a peep.

Constant warmth

Other people need to feel the heat before turning in for the night and need to be assured they'll wake up in comfort. The Opera, a radiant unit that performs as silently and as effectively as our natural convection heaters, can be installed in the corner of a bedroom to gently warm the bed and those sleeping in it.

Myth or reality?


"You need 10 watts of heat per square foot!"

You may have been told this by a sales representative—with a note of pride. But if the equation were that simple, we could have stopped improving our houses and our heating systems a long time ago. Several factors determine the wattage required for a room. Each house is unique and Convectair experts prefer to analyze the situation before dispensing advice.



Opera, radiant unit, 1250 W, greige

Special spaces

A photograph of a modern living room with vibrant red walls and a sloped ceiling. The room features a fireplace, two tall grey bookshelves filled with books and decorative items, and a large television on the right. A red sofa is partially visible in the foreground. The floor is made of light-colored wood.

Perhaps you want to finish the basement, build a room over the garage or add a bay window. An addition or renovated area will not necessarily require the same heating as the rest of the house—not if the job is done properly using the latest methods.

Tenor, radiant and natural convection unit, 1000 W

Saving energy won't save the world

But with the current state of our planet, saving energy can make a difference for the next generation. Convectair heaters—with their reliable quality and low energy consumption—can help to change attitudes and lead to considerable overall savings for the homeowner without affecting quality of life.

Without a doubt, the heat that costs the most is wasted heat—no matter what type of heating you use. According to energy efficiency studies, a poorly insulated house loses 11% of its heat through the roof, 15% through the basement walls and foundations, and 17% through the exterior walls.

By optimizing your home's efficiency, you can do something about that wasted energy. There are several ways to directly improve your energy efficiency: insulate your roof and foundations, install an efficient vapor barrier and weatherstripping, installing double-glazed or certified thermopane windows, choose insulated doors for your home and garage, and caulk your door and window frames. And when the time comes to replace appliances and heating equipment, keep in mind that when the choice is between two similar models, the less expensive one may not be the most economical option in the long run.

Myth or reality?

"Is my Convectair on around the clock?"

No. Each Convectair comes with a built-in thermostat that measures the room temperature constantly. Following the set point, it reacts to the number of people in the room and what they're doing. For example, a small family dancing up a storm will produce more heat than a couple playing cards. Other factors—a hot oven, the sun's rays—can raise the temperature of a room. But no matter what the circumstances, once the room reaches the set temperature, the Convectair stops heating. When the pace slows down again and the temperature drops, the unit kicks in to keep your room evenly and dependably comfortable.



*Mezzo, natural convection unit,
1000 W, greige*

Small steps that don't cost a cent but really pay off

Experts recommend that homeowners regularly air out their homes. The fastest and least expensive way to evacuate humidity and stale air from a room is to simply open a window for a few minutes. Note, however, that this step is beneficial if and only if you turn off all heaters beforehand!

You can also close the doors and lower the thermostats of unoccupied rooms. It's a good idea to close the drapes or shades in all rooms at dusk, to keep the heat inside. Remember to open them first thing in the morning to let the daylight in.



Opera, radiant unit, 750W, greige

Dealing with the garage

Homeowners often extend their houses by building over the garage. But even if the extension is well insulated, the garage will continue to be a cold place. It makes no sense to heat the garage in the hope of warming the space above it. Only a properly adjusted heating system can meet the unique requirements of this type of extension. The Convectair experts can help you plan a system that suits your needs and helps you save money!

A welcoming basement

Even a finished basement can have the all-too-common problem of dampness. And a bone-chilling atmosphere below ground level can persist despite mild weather and a cozy ambiance in the rest of the house. An extra heater can reduce this humidity. By moving the air slowly, evenly and constantly, a natural convection unit heats the entire air mass. That chilliness and stale air will disappear almost as soon as the Convectair is turned on, resulting in a warm and inviting environment where you'll want to spend more time!

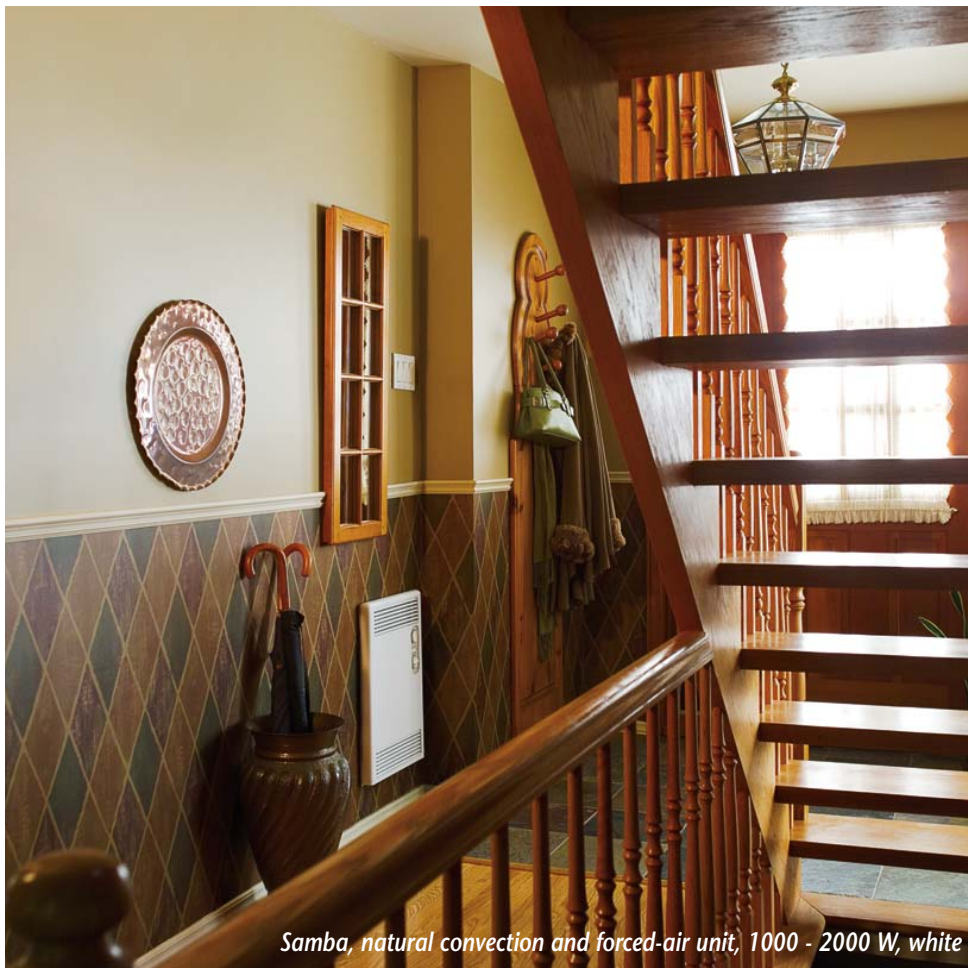
Myth or reality?

"I'm freezing! Turn the heater on high!"

You can't make flowers grow by pulling on the buds. Likewise, it's useless to turn the heater on high so that the room heats up more quickly. The heater will take the same amount of time to raise the temperature, but it won't stop once the room is warm. When it finally does peak, you'll feel hot enough to turn the thermostat way down—only to feel chilly later. Playing heating roulette costs money, and your home is no casino! Overworking your heater in order to warm the room in a flash means running up your heating bill. Slight shifts in temperature require only a slight use of energy—and cost much less.



Apéro, natural convection unit, 1250 W, mimetic white



Samba, natural convection and forced-air unit, 1000 - 2000 W, white

A warm welcome

Your front door should be well insulated and the frame trimmed with weather stripping in good condition to prevent energy from constantly seeping out. But since the door will be opened countless times a day, it's a good idea to take a close look at your entryway before all the fresh air that arrives with each knock on the door becomes an arctic gust through your house. You can create a buffer zone to stop the general heating system from kicking in by installing a sensitive, quick-reaction heater. The Samba is one of the Convectairs designed for this purpose. Made to fit into any nook or cranny, this recessed unit projects only 1 5/8 inches (4 cm) from the wall. Its two-stage thermostat ensures that your home receives natural convection heat on a regular basis and fan-driven instant heat when the temperature dips more than 5°F (3°C) below the thermostat setting. Powered by a turbine, the Samba heats the air rapidly, creating a wall of warmth near the door, so that the general heating system isn't working overtime. The Samba functions independently as an auxiliary to the general system and is Programmer-compatible so it can be part of a complete Convectair installation.

Comfort and light

The addition of a bay window or a solarium will bring you pleasure for years to come—but only if you can enjoy it in complete comfort no matter what the season. With these wonderful windowed spaces in mind, Convectair has developed a multitude of heater formats, all designed to maximize every last inch of space. The Opera radiant heater requires no more than a corner. The Solo slips beneath even a very low window, since it measures barely 14 inches (35 cm). The slim Alto does the trick between two close-set windows, and really delivers! In short, no matter how your space is designed, there's a Convectair heater to suit your needs—so you can admire the back garden, the distant mountains or the crashing waves any time of year.



Allegro, natural convection unit, 1000 W, white

The latest additions

The new Allegro and Allegro Duo models are innovations in the field of convection heating—and eye-catching, too. The Allegro heats by natural convection, while the Allegro Duo combines radiant heat with natural convection. The cabinets feature rounded corners, and their output grilles have been streamlined to two high-performance louvers. The design is simple and elegant, so that these heaters blend into any decor. They're versatile enough to suit every room in the house, furnishing additional heating or providing all the heat you need on their own. These two new select models will satisfy even the most demanding fans of good design.

A room for thought

Do you dream of working from a home office, setting up a small sculpture studio, or turning a former bedroom into a sewing room?

Anything is possible. But you'll never be able to spend hours lost in your work or favorite pastime unless you are perfectly comfortable!

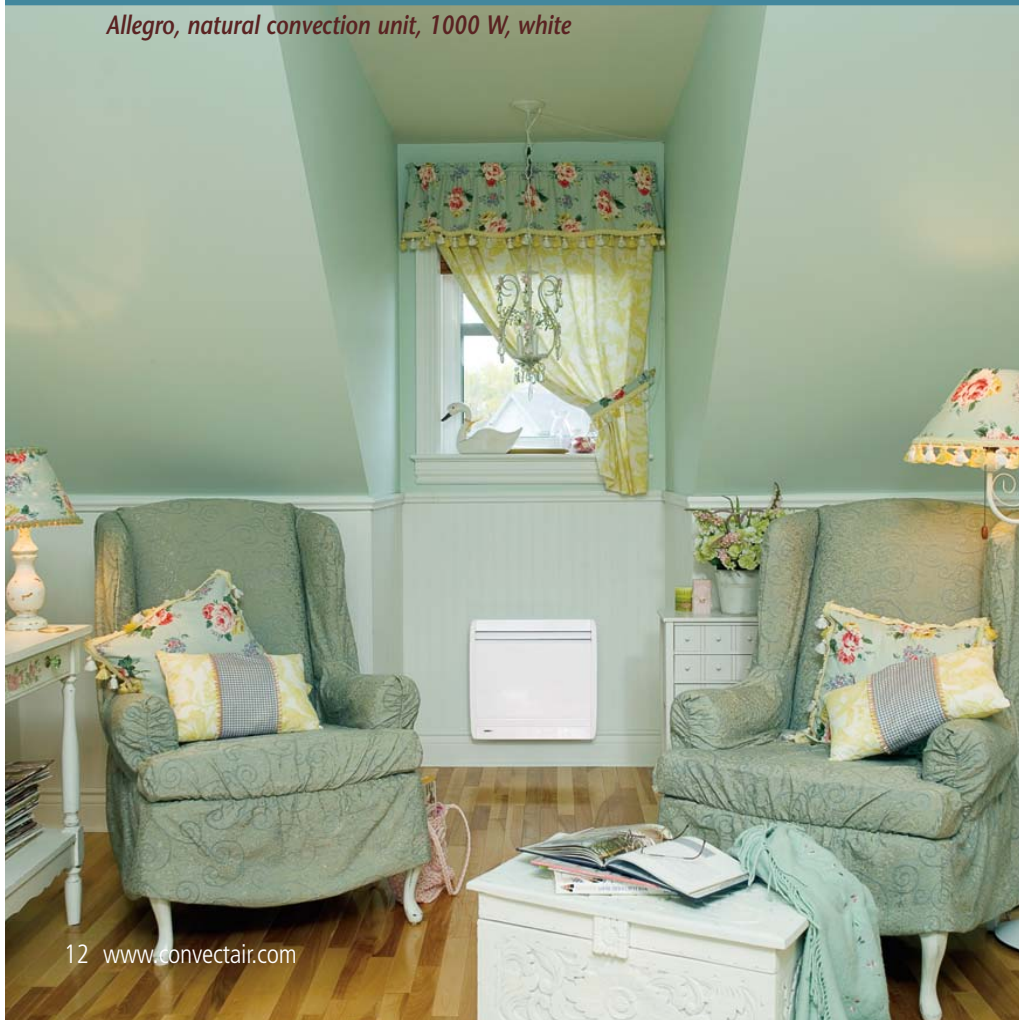
An essential partner

It's impossible to concentrate when your feet are cold, or when you're suddenly roasting! The endless back-and-forth between hot and cold can make life miserable. A pleasant, relaxing environment calls for a reliable, silent and accurate heating system. All Convectair heaters come with an electronic thermostat precise to 1/5°F (1/10°C), ensuring that the room remains warm. And the Programmer module automatically reduces the temperature by 7°F (4°C) at night, so that you can save up to 15% on heating costs, depending on the duration of the temperature drop.



Solo, natural convection unit, 1000 W, greige

Allegro, natural convection unit, 1000 W, white



Balanced solutions

To let you make maximal use of available space and enjoy sufficient heat, Convectairs will fit anywhere: in a corner, on a narrow or low wall, or even at the end of a counter—provided you leave enough room for the air to circulate around the unit. Square, elongated, wide and low, or special corner heaters: with Convectair, you have the choice of more than 40 different output and shape combinations. As for colors, depending on the model, the metal cabinets come in three shades that suit all tastes: white, greige or mimetic white, a shade that reflects surrounding colors. And the Tenor makes its mark with a combination of black steel and glass. In other words, no matter what your decor or your architectural constraints, Convectair has an elegant, efficient solution for your heating needs.

Myth or reality?

"1000 watts is 1000 watts, no matter what the source."

A 1000-watt Mezzo and your iron both generate 1000 watts of heat. In the dead of winter, however, if you replace the Mezzo in your living room with an iron on the highest setting, we'll bet that you'll notice a difference in the heat produced—and in the ambiance!

Auxiliary heating: have you considered a Convectair?

Is your bathroom always cold? Does the warm air from your home's heating ducts cool down before it reaches the far walls? And what about spring and fall, when your house feels chilly but the weather is too warm to justify turning on the central heating? In all these cases and many others, an auxiliary heater is the ideal solution. From the smallest fan heater to combos designed to transform your bathroom into a warm haven, to the elegant Tenor, there are endless possibilities for enhancing your comfort without the need for major renovations. Moreover, all programmable Convectair units can function independently as the need arises, without disrupting your home's overall heating system.



Tenor, radiant and natural convection unit, 1500 W

*Allegro Duo, radiant and
natural convection unit, 1000 W, white*



Your very own workroom

Many people spend hours at a time in their studio or workshop, which is typically located over the garage, in the basement or in an unused shed. In such spaces, as in the rest of your home, well-insulated walls, foundations, doors and windows will do wonders to keep the heat in. If the space has been renovated, the insulation used is very likely of better quality than that installed elsewhere in the house. If this is the case, the wattage required for heating can be adjusted downward. An analysis by the Convectair experts may determine that you can do with a lower-output unit that consumes less energy.

Your choice of heater can also be affected by the intended use of the space. Will it be an exercise room, a model train workshop, or perhaps a sewing room? If you intend to move around a lot, you'll doubtless prefer natural convection for the even, soft ambiance it creates. But someone whose activity is restricted to writing or knitting may opt for radiant heat, to feel enveloped in warmth.

You can request that the Convectair experts analyze your house plans or renovation plans on-line or by courier, or ask your Certified Convectair Electrician to help you.

The Programmer



Home heating can account for more than 50% of our utility bill. It makes up the lion's share of our energy costs, but you can put the lion on a diet without depriving yourself!

Time is money

Every household has its own rhythm, and every room has its own unique schedule. Once you are aware of this schedule, you can reduce your heating bill at no cost to your quality of life. Night-time offers the best opportunity for real savings. If you lower your thermostat by 7°F (4°C), your sleep will be that much deeper and more restorative, and your heating bill will go into sleep mode, too! Another thing you can do is lower the temperature of rooms that are unoccupied for more than six hours, such as bedrooms and bathrooms. The cost of reheating the room is less than the amount saved during the cooler period . . . so you come out on top. Keep in mind, though, that if the room is unoccupied for less than six hours, it is futile to lower the temperature. The energy spent in restoring the heat will be greater than the amount saved during that time, so you'll end up spending more.

Automatic pilot

If we had to adjust the dial on every heater in the house every morning, every evening and every time we left a room, we'd have no time for anything else. Several years ago, Convectair came up with a way to make life much easier for homeowners. We developed a Programmer module that can be used with almost all of our heaters. A cassette inserted into one unit allows it to closely follow your household's schedule—whether simple or highly complex—without requiring daily attention. Furthermore, by using an existing or special wiring, you can link up to 20 units in a household.

Programmer module



Solo, natural convection unit, 1000 W, white.

A stable temperature

All Convectair units feature an electronic thermostat that measures the temperature to a precision of 1/5°F (1/10°C), so that the unit constantly adjusts and thus distributes heat evenly. A highly precise instrument, the Convectair thermostat automatically takes surrounding factors into account: an open door, for example, or the heat of direct sunlight, or the presence of several people in a room (who produce an average of 60 watts of energy each). Depending on the circumstances, the unit will either stop, or continue working to reach the desired temperature. This level of accuracy prevents constant alternating between hot and cold, which not only causes physical discomfort but drives up the heating costs—temperature dips are expensive to compensate. Each Convectair unit lowers and raises the temperature by following your customized, energy-saving program to a T.

Intelligent heating

The Programmer comes with seven basic, pre-registered heating programs. And if by chance none of these suits your schedule, you can take a few minutes to enter your own data into the module. A daily, hour-by-hour heating plan can be set up for every room in your home in a snap! The program actually manages your heating system for you, so that it performs optimally according to your specific needs—without affecting your quality of life. Moreover, you can temporarily interrupt the program and lower or raise the temperature using the function selector, without affecting the thermostat settings or your registered data.

Bare warmth!



We're spending more and more time in the bathroom. This room has become our oasis—a place for relaxing and pampering. Homeowners are now willing to spend 10% or more of total value of their house on installing a new bathroom or renovating their current one. Yet some things never change: once you shed your clothes, you're going to feel the cold. And it's difficult to bathe fully dressed! Luckily, Convectair has everything you need to wrap yourself in tailor-made warmth.

Boléro, radiant and forced-air unit, 750 - 2000 W, white

The OPERA: simply radiant!

An enormous bathroom is wonderful—as long as it's warm enough at bath time. When you crave some caressing warmth like the heat of the sun's rays, radiant heaters are the best solution. Convectair manufactures many radiant units that can be used anywhere in the home. The Opera, for example, is available in two outputs and comes in white or greige to blend with all styles of decor. Placed in front of the bathtub, the Opera directly warms not only the bather, but any towels you hang on its bars! The vertical format makes it a perfect choice in bathrooms boasting several space-stealing windows and cabinets. With this model, any corner will do, yet the Opera will heat right to the center of the room. And all controls are hidden behind the heater's cabinet, which opens like a door when you need to adjust them. The Opera can be programmed to follow the household schedule, or can adapt to individual needs thanks to the function selector.



Opera, radiant unit, 1250 W, greige



The SAMBA: sensitive to your needs

The Samba offers countless advantages in the bathroom. Its two-stage thermostat controls two different types of heat. Natural convection makes your bathroom a real sanctuary, because it heats uniformly from wall to wall and from floor to ceiling. Homeowners can custom-design a heating schedule to save money automatically, without giving it another thought. The unit increases the room temperature by a few degrees to welcome members of the household as they start their day and as they turn in for the night, and then slows down while they sleep and during the daytime. The Samba also provides fan-forced heat. You can activate the fast-heat function whenever you like. Just turn on the timer to set the turbine in motion. The air drawn to the heating element is forced out for rapid and efficient heating. Anyone with small children at home will love this feature. Insider tip: turn on the fan for a few minutes while running the bath and you'll find yourself in a tropical paradise!

*Samba, natural convection
and forced-air unit, 1000 - 2000 W, white*



Calypso, forced-air unit, 1000 – 2000 W, off-white

THE CALYPSO: inspired by warm island breezes

Although any Convectair heater can be placed in the bathroom, some models have been designed especially for this space. The Calypso, in particular, is a bath-time favorite. This very compact heater combines a thermostat-triggered fan with a timer for rapid heating. The controls are tucked behind a splash-proof cover for optimal safety. Moreover, the Calypso is a cinch to maintain: it comes with a removable lint filter that takes only an instant to clean. This heater comes in two voltages. The 240-volt version is Programmer-compatible. The 120-volt non-programmable version can be plugged directly into an outlet, which makes this model an attractive choice for renters—you can take your Calypso with you when you move!

The SOPRANO: small but mighty!

The Soprano looks like a simple white box, but this particular box actually hides a powerful heater. This fan-forced Convectair is designed for rooms that are used only briefly and that offer a minimum of wall space—the laundry room, for example. It also makes an excellent auxiliary unit for heating a specific area on demand. Homeowners often choose the Soprano to warm a space poorly served by the central heating system, or to supply that boost of heat you sometimes need for everyday comfort. As long as it is mounted 6 feet (1,8 m) from the floor, this very discreet unit can fit anywhere in a room—above a door, near the shower or over a washbasin. It can operate on a timer or by means of a thermostat, both optional. The Soprano is not programmable and can be wired at 120 or 240 volts. Once you choose this compact performer, you'll sing its praises every day!

Myth or reality?

"Before I take my shower, I just need to turn up the central heating thermostat, and in 10 minutes the bathroom is warm!"

Really? Have you considered how much it costs you to heat the whole house while you bathe? If your central heating cannot supply enough heat to adequately warm every single room in your home, then opt for an auxiliary heater. It provides exactly the amount of heat you need—rapidly and accurately. Do the math!



Soprano, forced-air unit, 750 or 1500 W, white

Deluxe combos

Convectair has developed three deluxe all-in-one models, designed for supreme comfort. You'll cherish them for life!

The warm Diva

The smooth, gentle curves of the Diva house a radiant heater twinned with a fan. This unit heats all surfaces within its reach and gives you an impression of almost palpable comfort. The closer you get, the more you feel the heat. Even when you hang several bath towels on its towel bars, you'll enjoy a comfortably heated room. The Diva's fan, located at the bottom of the heater, blows air out the front so that the center of the room is warmed. And because the fan is timer-controlled, it takes only a few minutes to heat up the entire room. What's more, the Programmer-compatible Diva will follow your household's schedule to the letter.



Diva, radiant and forced-air unit, 500 - 1500 W, white

Boléro, radiant and forced-air unit, 750 - 2000 W, white



The Boléro: Mediterranean warmth

Now even more attractive, the new Boléro is without a doubt the great classic of the Convectair combination models. We've redesigned this model so that the extra-large radiant panel offers a more powerful heating surface of 2000 watts, for a feeling of complete warmth. Thanks to its three bars and two hooks, warm air forced out from an opening along the side of the cabinet warms your towels and bathrobes. And the function selector is now located on the front of the heater. A signal light for each function and the turbo mode make the Boléro easier and more efficient than ever to use. As for the fan, a new timer allows you to adjust the amount of rapid heating from 30 to 120 minutes. For ultimate comfort, the two heating modes can be used at the same time. Last but not least, this model comes with a lint filter. Every moment spent in the company of the Boléro is guaranteed to be pure bliss.



Jazz, natural convection unit with fan-forced heat through the bars, 1000 – 2000 W, white

To the tune of Jazz

The Jazz model combines three functions. Natural convection evens out the room temperature and moves the air mass around so that humid air does not stagnate. The fan in this model heats the air quickly and powerfully—an ideal feature for days when fatigue makes the temperature seem lower than it actually is. Last but not least, the towel bars diffuse hot air to dry or warm your bath towels. The bars can also dry damp towels by circulating the ambient air. This option lets you enjoy the towel-drying feature no matter what the season, since you likely will not want to heat during the summer. The Jazz is available in 240-volt and 120-volt versions. The 240-volt version is Programmer-compatible, while the 120-volt version plugs directly into an outlet and can be removed from the premises.

Myth or reality?

"The easiest way to heat the bathroom is to turn the shower on boiling hot and then wait a few minutes."

A few hundred gallons of water later, your bathroom is cozy but the house is humid for the rest of the day and there's barely enough hot water left in the tank for a load of laundry!

An easy alternative to this extreme measure is a hot-air unit that blows out warm air at just the right moment. Better yet, why not take a look at models that combine radiant or convection and fan-forced heat? They keep pace with the rhythm of your household—heating the bathroom just before you arrive, drying your damp towels and warming your bathrobe. What more could you ask for?

NOT JUST A LOT OF HOT AIR!

An informed choice begins with a heat-loss calculation. The result will determine the wattage required based on several factors: room size, ceiling height, window dimensions, the degree of insulation, the age of the house, and its geographic location. This calculation can be per-

formed by your electrician or by our Convectair technical service.

Complete the evaluation form available on the Convectair website or send us a copy of your house plans, so that we may advise you as quickly as possible. A precise calculation by our experts will ensure that you can purchase a reliable system tailored to your needs and expectations.



Samba, natural convection and forced-air unit, 1000 - 2000 W, white

With you for life?

Convectair is committed to offering high-performance, reliable heaters for the very long term.

Our elegant, round-cornered metal cabinets are designed to be safe and to endure the passing of time and trends. All our white, greige, black and off-white cabinets are covered in a polyester and epoxy finish that resists water and dampness, whereas the front panel of the Tenor is made of smoked glass, and its silver circuitry is protected by anti-rust enamel. Consequently, a Convectair heater can be installed anywhere in your home without risk of corrosion.

Reliable construction

Convectair doesn't bring out a new model without first testing it. Before any model goes into production, its technology is thoroughly researched—and it must pass numerous quality tests and meet all American, Canadian and European standards and requirements (UL, CSA, CE).

Moreover, if need be, Convectair technicians can repair any model sold in the last quarter century. In addition, all documentation and instruction

manuals are available online. If you purchase a house that comes equipped with Convectair units, our technical team is always ready to answer your questions on their functioning or maintenance, no matter what the age of your heater.

When you purchase or come into possession of a Convectair heater, you can be assured of owning a cutting-edge, reliable product that will keep you comfortable and will last for decades. And beware of imitations—insist on the real thing. The Convectair name is stamped on all our models.

Safety first

Convectair heaters feature grilles that keep out tiny objects and children's roaming fingers. Moreover, it is impossible to access the heating element from the bottom of the unit. (Children should nonetheless be taught never to touch the surface of a heater, as it can become hot under certain conditions). All models can be locked to keep children from playing with the Programmer module and the control panel. As an added precaution, every Convectair model comes equipped with a safety mechanism that cuts off the power supply to the heater in the event of overheating.

Does it require upkeep?

Stop and go

Once it is programmed, a Convectair heater continues the specified heating cycle on its own, requiring no further attention. However, an override feature allows you to temporarily stop or modify the temperature setting—after which you simply reactivate the Program mode to return to the regular program. During electrical blackouts, the heater will stop functioning, like everything else in your household that runs on electricity. But Convectairs don't stop working entirely: the data registered in the Programmer will remain in memory indefinitely, with the exception of the hour and date, and they'll remain accurate for about 10 hours. If the electricity is out for more than 10 hours, simply re-enter them.

Gentle cleaning

These heaters are a cinch to maintain. Convectairs are always installed at least four inches (10 cm) above the floor so they will draw in the room's cooled air, not dust. You can use a damp cloth or your vacuum cleaner to remove any accumulated particles from the catch tray. The unit's surface can be wiped with a cloth and a very mild detergent to keep the shiny polyester and epoxy coating sparkling clean. Metal pot-scrubbers and any other abrasive products should be avoided.

We would like to thank La Boutique de plomberie Décor 25 for their collaboration on the photos in this section.

www.decor25.com



Soprano, forced-air unit, 750 or 1500 W, white

Long-term guarantee

All Convectair heaters are covered by a two-year guarantee against manufacturing and material defects. A five-year guarantee applies to the heating elements. Once the guarantee expires, the Convectair technical team is a reliable source of advice and service. Even 20 years after pur-

chase, a Convectair unit can be repaired and refurbished. Parts and expertise for every single model—current and discontinued—are available at all times on our website, by telephone or through your electrician.