



**Capital
Electric**
COOPERATIVE

JULY 2026

**We wish you a
happy and safe
Independence Day!**

**Together, we recognize our
country's 250-year milestone. Let's
stand together and continue to
appreciate the freedoms we enjoy
today and in the future.**

IN THIS ISSUE

- Federal grant focuses on wildfire risk
- Evolution of outage tracking
- A patriotic tradition continues
- Unclaimed capital credits
- Board minutes



It's an efficient process to trench and bury underground cable with a plow train.

Wildfire risk addressed by improvements

BY GREG OWEN, ENGINEERING MANAGER

Improve reliability for members in rural Burleigh County? Count me in. Recover much of the costs via a federal grant? Now, we're really talking.

Capital Electric Cooperative has long desired to convert a three-phase overhead line between Wilton and Regan to underground cable. This line is a major tie between three rural substations in northern Burleigh County. One noticeable feature near this line is a wind farm, which means it's windy there. And wind is no friend to overhead lines during summer storms or winter frost and ice. Let's not forget about an extremely important issue, which is wildfire risk.

The last factor led Capital Electric to join a consortium of 35 cooperatives around the country to apply for a grid resilience grant from the U.S. Department of Energy focused on mitigating the risks of wildfires associated with electric utilities.

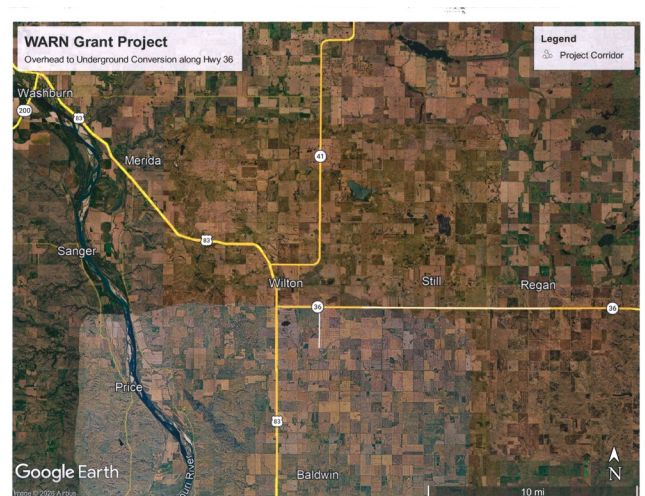
The Wildfire Assessment and Resilience for Networks (WARN) project, led by Holy Cross Energy in coordination with National Rural Electric Cooperative Association Research, pools project ideas, including enhanced vegetation management, micro-grids, fire-resistant pole wraps, monitoring sensors and, as in Capital Electric's case, burying overhead conductors. Each participating cooperative receives significant cost reimbursements for implementing their projects as they harden grid assets against wildfire-related risks.

Capital Electric's project converts 11 miles of overhead lines to underground cable. After completion, this underground line will not only provide greater reliability to members, but it also greatly reduces the risk of starting a wildfire or being impacted by one that spreads to the area. Part of the consortium's research utilizes a software tool to model where each utility's service area would have the highest risk of wildfire

effects. Capital Electric is using these results to guide the selection of future wildfire-hardening projects.

With the grant process starting in 2022, the long-anticipated wait finally has come to an end this spring. But the wait was worth it, as a professional and talented project team came together to deliver results for Capital Electric's membership. While cost recovery is a great benefit of the grant, benefits of situational awareness and project planning tools will yield even longer lasting results for the cooperative and its members.

North Dakota's weather can result in dangerous situations in any season. Capital Electric's goal is to improve safety and protect our neighbors. We are in this together! 🤝



The overhead to underground conversion includes a 9-mile stretch along Highway 36. It also includes a 2-mile segment south of the highway on 26th Street.

It's not easy work to repair storm damage, but the process begins with early outage recognition.



The benefits of early outage reporting

Power outages are never good. North Dakota weather patterns can change from day to day and from season to season, which can affect power connections. Infrastructure can be damaged during any type of weather.

As a modern society, we are accustomed to uninterrupted on-demand electricity. This expectation is a result of continued system and communications improvements. Capital Electric Cooperative does its best to meet member expectations and today's technology makes that more possible than ever.

When an outage occurs, it's normal to feel frustrated and impatient. You are caught off guard and the annoyance of joining a long line of outage-affected callers comes into play. We are giving you an easier way to report your outages.

Until recent years, lineworkers were dispatched to identify an outage issue without a clear idea of exactly where and why it happened. This process lengthened the time your food was thawing in the freezer.

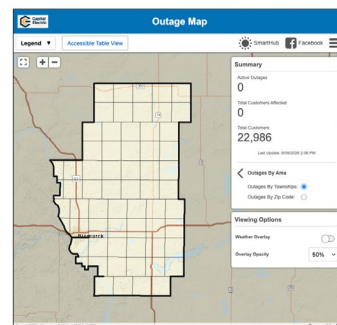
Today's technology has significantly reduced the time an outage interferes with daily life. Electric meters communicate outage information over the cellular network the moment it occurs, and predictive models identify likely locations of the cause.

Our outage center, located at capitalelec.com/outage-center, contains a real-time map reflecting current outages on our system, including the number of services

affected in your area. The map will then reflect when power is restored. The webpage also includes outage reporting instructions, safety information and an outage restoration explanation.

As a member-owned cooperative, we are here to serve you and keep your options open when you experience an interruption in electric service. Our staff puts you first, and we are here when you need us the most. We welcome your comments and concerns always, so don't hesitate to contact us. ☎

Outage Center



Report an Outage

- Outage Support Line: 855-937-1738
- Through SmartHub.
- Report an Outage by texting the word "OUT" to 855-937-1738 or dial the number and select option "2".
- Please do not use Facebook or email to report outages or dangerous situations.

The outage map on our website enables you to monitor specific outages and the number of members affected.



It takes a little effort to set up and take down the flags, but also rewarding and fun. Five Optimists on each side of State Street get the job done quickly.

Bismarck Optimist Club continues patriotic tradition

Patriotism is alive and well, as proven through the Bismarck Optimist Club's Avenue of Flags program.

The American flag is a powerful symbol that reminds people of our common heritage, history and ideals. The Bismarck Optimist Club proudly displays the American flag along State Street and Boulevard Avenue each year on Memorial Day, Flag Day, Independence Day, Labor Day and Veterans Day.

"The Bismarck Optimist Club is incredibly proud of our Avenue of Flags tradition. Seeing the American flags line State Street reminds us of the values that bring our community together – service, sacrifice and pride in our country. With volunteers and community support, it's a meaningful way for us to honor those who have served each year," says Club President Jillian Lagasse.

Avenue of Flags started in 2014 and has been supported through members' time and efforts on those holidays. It is extremely rewarding as the volunteers receive positive feedback, including horns honking

thanks as they work. The flags are placed early in the morning and taken down before sunset.

The Bismarck Optimist Club was founded in 1971 by 25 community members. It is a member of Optimist International, focused on supporting community youth programs, such as an annual Easter egg hunt, scholarships, grants, backpacks, assistance for students involved in music and athletics, and more.

Besides the Avenue of Flags, the Bismarck Optimist Club raises money by wrapping Christmas gifts at Kirkwood Mall each December and hosting an annual bowling fundraiser. The club holds a weekly lunch meeting for members, inviting a speaker to discuss community programs.

If you are interested in learning more about the Bismarck club, visit optimistbismarck.com. New members are always welcome to be part of something positive in our area. ☺

Operation Round Up supports fire victims

The recent fire at the Alberta Heights apartments in Bismarck was a tragedy for so many. They lost their homes and their possessions, and it was devastating financially for many. Capital Electric Cooperative's Operation Round Up board voted to support those affected by providing a grant to cover their last electric bill.

This generosity on the part of our members who support the program was not unnoticed. One resident mailed a thank you stating, "I have dealt with many businesses in my 89 years, but yours is the first to show such loving kindness. My special needs son and I appreciate this!" What a great feeling for co-op members to come together when they are needed most! ☺

Capital credit claims

Notice of redemption by Capital Electric Cooperative Inc.

Listed below are the names of former Capital Electric Cooperative members who had capital credit checks mailed to them in May 2020. These checks have been returned to Capital Electric by the postal service because it could not locate the members at the address on file. Further search by Capital Electric personnel has not turned up their whereabouts.

If you received electric service from Capital Electric any time during the years 2001-02 and your name is on this list, please contact our office. If you know of the whereabouts of members on this list who received electric service from Capital Electric at any time during

the years 2001-02, please have them contact our office at 855-937-1736.

Please keep in mind not all the capital credit amounts are large. However, we desire to get the money due to those who earned it, and it helps clear up our records.

We will reissue capital credits for those members on the following list who notify us prior to Dec. 1. Notice is hereby given that any of the unclaimed capital credits outstanding after Dec. 1 will be forfeited pursuant to Section 10-15-34.1 and 10-15-23 of the North Dakota Century Code. ☺

A-1 WHOLESALE
AAKER, COLIN
ABACO
DEVELOPMENT LLC
ABBATE, ANNE
ABBATE, SAMUEL
AGRILIANCE
AHERIN, OLGA K.
AHMED, SHAMOON
AJ SIDING & WINDOWS
ALBER LANDSCAPING
ALEXANDER, JOAN L.
ALEXANDER, EARL W.
ALEXENKO, BRENT
ALKIRE, PAM
ALLEN, ANGELA
ALLEN, FLOYD
ALLIANCE
PLUMBING COMPANY
ALLICKSON, MELINDA R.
ALL-IN-ONE PRODUCTS
AL-ZAYADI, CHASTITY
AMAN, TARA
AMBLE, MARTY
ANDERSON, SARA JEAN
ANDERSON, SUE
ANDERSON, RON J.
ANDERSON, RHONDA
ANDERSON, JOAN
ANDERSON, MINDY
ANDERSON, GLORIA J.
APPELGATE, JANELLE L.
ARMELL, SHARON
ARMSTRONG, DENNIS J.
ARMSTRONG, J.H.
ARMSTRONG, ADELE M.
ARNOLD, BRADLEY
ASBRIDGE, TATE
ASHWORTH, CHERYL
ATA BLACK
BELT ACADEMY
AUNE, ELEANORE E.
AUSTIN, JEFFREY
AVARD, DANINE
AVERY, CHARLES M.
AXT, TODD
BACHMEIER, JO DAWN
BACHMEIER, GREG
BAD MOCCASIN JR.,
SIDNEY
BAKER, KYLE
BALZER, JOSEPH M.
BALZER, RENETTA S.
BARBER, MICHELLE
BARES, ANGEL
BARTELS, JANE
BARTELS, DAN
BARTH, JASON W.

BASARABA, MATT
BASARABA, HEATHER
BAUER, STACY
BAUER, PAM
BAUER, JASON
BAUMGARTNER, MARK
BAUMGARTNER, JASON
BAUMILLER, AMY
BAYER, LARRY
BEAN, GARY L.
BECKER, JEREMY
BEISSEL, DOUGLAS T.
BELGRAVE, LAURA
BELL, ADRIANA
BENJAMIN, GLADYS
BENTZ, LUCILLE
BENTZ, CHASTITY
BERG, TODD
BERG, DAWN
BERGQUIST
DEVELOPMENT INC.
BERGSTAD, KEN
BERGSTAD, MARY
BERRETH, GARY W.
BERRETH, SANDRA A.
BERVE, JENNY
BEYER, RONALD L.
BEYER, WAYNE
BEYER, JAY
BIALORUCKI, CRAIG
BIRD BEAR, THOMAS
BIRKBECK, BOB
BISMARCK RENT
ALL NORTH
BITZ, CARLA J.
BJERKE, JARRED
BJERKLIE, DONNA
BJORNSRUD, EILEEN
BLAKELY, TAMMY
BLANDFORD, EMMA
BLUE BIRD, ATHEL
BOLD, TEMUZHIN
BOLME, MICHAEL
BOLTON, LANAE
BOLYEA, SANDRA S.
BORGHEINCK, ERVIN J.
BORJESON, STEVEN J.
BOSCH, ALEX
BOSCH, MICHELLE
BOUSTEAD, JOHN H.
BRADY, GREG
BRADY, MARGE
BRANAN III, CHARLES B.
BRANDT, SHANNON
BRANDVOLD, JASON
BRANNAN, J. LEE
BRAUN, MICHELLE
BRAUN, DAVID

BRAZIL, ANDRE
BRECKEY, ALYCE
BREDDING, AVIS J.
BRENDEL, LINDA
BRIDE, CASEY JO
BROECKEL, THOMAS
BROWN, LETITIA L.
BROWN, MARGARET A.
BROWN, JOSEPH L.
BROWNING, TODD
BROWNING, JENNIFER
BRUNMEIER, RHONDA K.
BUCHMILLER, SHIRLEY
BUELOW, LAWAYNE
BUFFINGTON, JERRY
BULCHENKO, ALEKSANDR
BULCHENKO, VICTOR
BULCHENKO, ZINA
BULCHENKO, YEKATERINA
BURKART, ANNA M.
BUSCH, MICHELLE L.
CADOTTE, DONALD C.
CADOTTE, RUBY L.
CAIN, DEBORAH
CAMPBELL, STACY
CARLSON, MICHAEL E.
CARLSON, TOBY
CARLSON, SHARON A.
CHARETTE, GREG
CHARRIER,
RICHARD SCOTT
CHRISTENSEN,
TIMOTHY L.
CHRISTENSON, RONALD
CHRISTENSON, GAYLE
CHRISTIANSON, GERALD
CHRISTIANSON, MARY
CICHY, JOSEPH J.
CLOOTEN, GENE
CLOUSE, KEVIN D.
CLOUSE, LAURA
CODDINGTON, DAVID
COFFEES & KITCHENS
COMFORT CARE INC.
COOPER, JAMES C.
COVARRUBIAS,
MICHAEL HUMBERTO
CRANE, JAMIE
CRESWELL, TODD
CRYSTAL RIVER
WORSHIP CENTER
CULVER, LYNN J.
CUNNINGHAM, PATRICK
DAILEY, KRISTINE
DAKOTA LANDFILL INC.
DAKOTA MOTEL
& INVESTMENT
DAVILA, CYNTHIA A.

DAVIS, LINDA
DAVIS, DARREN L.
DAVIS, MICHELLE
DAVIS, NICHOLE
DAVIS, BRETT
DAVIS III, RICHARD D.
DEAN, BRIAN K.
DEAN, REBECCA
DEBOER, MELISSA S.
DECORATIVE CURBING
AND LANDSCAPING
DEMERS, JENNIFER
DEMPSEY, JOHN M.
DENGEL, HARLAN F.
DENNIS, KATHERINE L.
DERHEIM, OSWALD
DERHEIM, ELLA
DIETZ, STEVE
DIETZ, RONDA
DILLAVON, PAUL
DILTS, ROY B.
DIXON, RENEE
DIXON, DARRELL
DOCKTER, SHANE B.
DOCKTER, SHANE A.
DOCKTER, BURTON L.
DOLL, LINDA
DOLL, JOAN
DOLL, JAMES A.
DOROTHY, JULIE R.
DORSCHER, MARIE
DOUGHERTY, COLLEEN
DRAKE, F. GENE
DRIESEN, ANNETTE
DROVDAL, DANIEL
DUCHENE, LEON
DUCHENEAUX, HADDEN
DUCHENEAUX, BRANDON
DUPRE, ROLANDE F.
DURBIN, ANGELA
DURBIN, JOHN F.
DURKEE, JOCELYN JILL
DURYEE, DEBORAH L.
DWYER, DANA
EAKEN, WILLIAM B.
EBEL, PAMELA
EBERLE, STEVE
EDGERLY, ALICE
EDLAND, MELISSA
EDWARDS, LINDA L.
EHRETH, ROZANN
EMINETH, KEVIN
EMINETH, DARYL
ENGEL, JERRY
ENGELMAN, LIND
ENGELMAN, JERALD
ENNEN, LORI
ERCK, KRISTEN

ERICKSON, ELSIE
ERLANDSON, BOB
ERLANDSON, KIMBERLY
ERMAN, MARVIN
ERMAN, PHYLLIS
ESCO CORP.
ESPOSITO, MICHAEL
EVANSON, SANDRA J.
EVERSON, DUSTIN
FALLGATTER, MEGHAN
FARMER, SENADEE M.
FARMER BROS. CO.
BR. #37
FARMERS BROS. CO.
FEDORENKO, RONALD
FEIST, AMANDA
FERDERER, TAMMY
FETCH, JERRY G.
FETZER, JASON
FINNEMAN, RONALD
FIRE CLOUD, SOPHIE V.
FISCHER, DIANE
FISCHER, DONALD
FISCHER, AMY
FISCHER, DONALD J.
FISHER, TOM
FIX, RANDALL L.
FLECK, E ROSEMARY
FLECK, RANDY
FLECK, SHELLY
FLEURY, LANI M.
FOLENDORF, ERIC
FOLENDORF, JULIE
FORBES, JAMES A.
FOSS, EDNA
FOSTER, RUSSELL S.
FOSTER, BRENDA K.
FOWLER, LISA
FOWLER, HEATHER
FOWLER, CHARLES W.
FRANKLUND, DANIEL
FREADRICH
SISTERS PARTNERSHIP
FREDERICKS, ANNA
FRENZEL, SARAH
FRENZEL, LANIE
FRIESZ, ROGER R.
FRIESZ, JOIE L.
FRITO LAY INC.
FROHLICH, ROSS
FRUEH, ROBERTA
FUNK, ARTHUR
GALLAGHER, JOHN
GALT, SHERRY
GALT, DARREN
GARDINER, VERNA
GARDNER, JANEL
GARTNER, JOHN

GASSER, MARINA
 GEHRING, HUBER PHYLLIS
 GEIGER, WESLEY
 GEIGER, JONATHAN J.
 GEIGER SR., HENRY P.
 GELLERMAN, DENNIS C.
 GENDREAU, SUSAN
 GEROU TRANSPORTATION
 GEYER, SHIRLEY
 GHORBANI,
 DAPHNE SCHAAL
 GIANNINI, CHAD R.
 GIANNINI, STEPHANIE S.
 GIERKE, PAULINE
 GIRARD, ALICIA
 GLAS, DENVER
 GLASS, KENNETH
 GLASS, JULIE E.
 GLASS, DARIN M.
 GLASSER, FRANK
 GLASSER, DOROTHY
 GLEICH, PATRICK J.
 GLINES, SHANNON J.
 GOEBEL, EDNA
 GOERGEN, ALENA
 GONZALEZ, GILBERTO
 GORDON, TAMMY
 GORDON, TODD
 GR GRAPHICS
 GRAD, MEGHAN
 GRAFF, ERICA
 GRAMS, BENJAMIN L.
 GRAMS, ANGELA M.
 GRAY, THOMAS K.
 GRAY, PAULA K.
 GREAT PLAINS
 HOMES INC.
 GREAT PLAINS SUPPLY
 OF JAMESTOWN
 GREEN, TRACY PAUL
 GREENE, JUDITH
 GREENQUIST, GREGG
 GREFF, DAVID A.
 GRINA, BRUCE
 GRUBB, TERRI
 GULLICKSON, KRISSEY
 GUSTAFSON, PAUL
 GUTHMILLER, ROBERT
 H.A. THOMPSON
 HAAKENSON, JAMES E.
 HAGEL, AMY
 HAGEL, DONNA
 HAGER, NICOLE
 HALE JR, ANTHONY
 HALTER, PAUL J.
 HAMAN, RANDY
 HAMAN, ANN
 HAMIL, BEVERLY J.
 HAMILTON, GREGORY J.
 HANCE, BOBBI J.
 HANDE, HEIDI
 HANSEN, BILL
 HANSON, ALLYN
 HANSON, AMBER
 HANSON, CATHARIN
 HANSON, LYNN D.
 HARDY, KALI L
 HARDY, RUBY
 HATZENBUHLER, CRAIG
 HAUCK, SCOTT
 HAUCK, TOBIAS
 HAUSAUER, TINA
 HAYES, SHARON
 HEGWOOD, EMMETT L.
 HEINRICH, JOE
 HELBLING, TODD
 HELD, JANEL
 HELLMAN, MELISSA
 HENKE, BECKY
 HERMAN, RAY
 HEW, HOLLAND
 HIEB, JACQUELINE K.

HIETALA, TIA M.
 HILDEBRAND, NANCY L.
 HILL, RONALD E.
 HILL, RHONDA R.
 HILSENDEGER,
 LADONNA M.
 HILSENDEGER, LISA
 HILZENDEGER, GERALD
 HINKEL JR, BRUCE E.
 HOCHHALTER, SHERRY
 HOCHHALTER, RENEE M.
 HOCHHALTER, KRISTY K.
 HOERNER, JESSICA
 HOERNER, JOHN
 HOFF, JULIUS
 HOFFER, RICHARD
 HOFFMAN, ERIC LEE
 HOFFMAN, DAN
 HOLDEN, JOYCE
 HOLLOWAY, DOUGLAS L.
 HOLMAN, BROOKS
 HOLT, FRED
 HOLT, MARY
 HOLWEGNER, PAULINE
 HOPFAUF, CHARLENE
 HOPFAUF, DUANE
 HOPKINS, DANIEL J.
 HOPPER, DEANA
 HOPPER, RUSSELL
 HORNBAKER, BRIAN LEE
 HOUSE, GAY S.
 HOYNES, ANDREA
 HPS LLP
 HUBER, JAMI
 HUGHES, PATRICK
 HUGS, LYNN
 HUMMEL JR, RONALD V.
 HUNTLEY, LISA L.
 HURAVITCH, KERRY
 HUST, GEORGIA
 HUST, KEITH
 IVERSON, CHARLENE
 JABLONSKI, GARY
 JACOBSEN, SUSIE
 JACOBSEN, TIM
 JAFFE, MAXANN
 JAHNER, ALOYS
 JAHNER, ADAM
 JAHNER, LESLEY J.
 JAHNER, LEANN
 JAHNER, MATTHEW
 JAHNER, WAYNE
 JAHNER, MISSY
 JANSSEN, GEORGE
 JANSSEN, VERNA E.
 JARISCH, DAVID
 JENNINGS, JUDY
 JENNINGS, PAMELA
 JETTY, TARA
 JETTY, LAURA
 JEWETT, KENNETH H.
 JOERGER, DAVE
 JOHN, RHONDA M.
 JOHN HENAGER
 TRUCKING
 JOHNS, KATHERINE A.
 JOHNSON, EDWARD
 JOHNSON, JULIE
 JOHNSON, ROXANNE
 JOHNSON, BONNIE A.
 JOHNSON, BOB
 JOHNSON, VIRGINIA
 JOHNSON, JAMIE
 JOHNSON, RHIANNON
 JOHNSON, CANDACE
 JOHNSON, PAUL K.
 JOHNSON, SUMMER
 JOHNSON, MICHAEL L.
 JOHNSON, TIM
 JOHNSON, JULIE K.
 JOHNSON, JASON
 JOHNSON, KARA C.

JOHNSON, SHANE
 JOHNSON, ANTHONY
 JOHNSON, HEATHER
 JOHNSON, STEVEN E.
 JOHNSTON, RICHARD
 JONES, MATTHEW S.
 JONES, JOSIAH
 JORGENSEN, STEFANIE
 JORGENSEN, DEAN
 JOUBERT, ROBERT
 JOYCE, PRESTON
 JOYCE, THOMAS
 JOYCE, SARAH
 JULSON, DEL
 JUND, GREGORY R.
 JUND, CALLI
 JUNGLING, DONALD
 JUNGMAN, JEFF
 KAHL, MIKE
 KALOUSTIAN, GREG
 KARNOPP, WILLIAM
 KARY, MELISSA
 KARY, BENJ
 KEARNEY, JAMES A.
 KEITH, LAURIE
 KELLER, AGNES
 KELLER, TRACY
 KELLER, L.K.
 KELLER, JEROME
 KELSCH, PIUS F.
 KENSINGTON
 COTTAGES CORP.
 KESSLER, MARIA
 KIDDER, SANDRA
 KIHLLSTROM, DAWN
 KIHTIR, TUGRUL
 KIHTIR, SENA
 KIMBALL, BRIAN
 KINN, HEATHER
 KIRBY, MEAGAN
 KIRBY, BRIAN
 KIRKING, NEIL
 KIRSCHMANN, JISELLE
 KLATT, JESSIE
 KLECKER, MARY ROBIN
 KLEIN, TAMMY D.
 KLEIN, SHARI
 KLEMETSrud, JENNIFER
 KNAPP, FLOYD
 KNAPP, LAVERNA D.
 KNIGHT-SOLIDAY, KAREN
 KOCH, TRINA
 KOCH, ROBERT P.
 KOENIG, KRIS
 KOFFLER, LILLIAN
 KOPPANG, FRAN
 KOUBA, RONALD
 KOUBA, LOLA
 KRAFT, ARNOLD E.
 KRAMER, JEFFRY
 KREIN, DALE A.
 KREIN, JEAN
 KRENZEL, RYAN J.
 KROH, JENNIFER
 KROLL, PAM
 KRUEGER, SHARON S.
 KUCH, MARILYN M.
 KUGLER, LISA E.
 KUNTZ, DEBRA
 KUNZ, KRISTELLE
 KUYLEN, DAVID A.
 L&S FEIST FAMILY
 LABRANCHE, JACK
 LADUCER, HEATHER
 LADWIG, LISA
 LADWIG, CORY
 LAFORTE, JOANN R.
 LAGRO, LEAH M.
 LANG, PAULA A.
 LANG, TRAVIS
 LANGE, LEONARD
 LANGE, VICTORIA

LARKIN, MICHAEL R.
 LARSON, EARL
 LAS INTERNATIONAL
 LAUB, LOUISE
 LAUER, NIKKI
 LAUER, JEREMY D.
 LAW, WILLIAM
 LAW, LYLA
 LAWRENCE, DAN
 LEACH, CINDI
 LEANDERS, RAMONA C.
 LEDEBUHR, ERWIN H.
 LEDEBUHR, EVELYN D.
 LEGEND HOMES INC.
 LEGG, CHELSEY
 LEMER, MARLA
 LEMIEUX, ROBERT
 LEMIEUX, CONNIE
 LENIHAN, PATRICIA
 LESMEISTER, JOEL
 LEYER, GERMAINE
 LINDSEY, HOLLY A.
 LINDSEY, WILFORD D.
 LINK, JEREMY A.
 LIPP, WESTLY
 LIPPERT, SARAH
 LITKE, DANE
 LITKE, KELLY MOE
 LOMMEN, CHEYENNE
 LONG SOLDIER, MICHELE
 LONGTIN, JOHN
 LONGTIN, LISA
 LUND, JAMIE
 LUSK, HAROLD G.
 MACDONALD, JENNIFER
 MACHADO-FODERA, TIMA
 MAIER, JENIFER
 MANDAN, SHASTA
 MANGUM, AARON LEE
 MANGUM, EMILY TODD
 MANN, ROSE
 MANN, MAEGAN J.
 MARQUART, JANET
 MARTIN, GARY C.
 MARTIN, MARVEL
 MARTIN, JAMES R.
 MARTIN, DEBORAH L.
 MARTINEZ, TONI
 MARTINEZ, LATISHA
 MARTINSON, MAVIS
 MARX, ALLAN
 MARX, CALEB
 MASCARENAS, CYNTHIA
 MATTHEWS KOCH,
 JESSICA
 MAYER, MICHELLE
 MAZIGIAN, KATHY
 MAZIGIAN, DAN
 MCADDOO, AMY
 MCBRIDE, JULIE A.
 MCCARTHY, TYLER
 MCCAUGHTRY, F REX
 MCCLAIN, RACHEL
 MCDONALD, MYRA
 MCDONALD III, DANIEL J.
 MCGANNON, MEGAN
 MCGILLIS, JOSEPH J.
 MCGREGOR, KELLY
 MCLAURIN, WILEY
 MEES, JESSIE
 MEIDINGER, DELORES
 MEIER, STEVEN M.
 MENNING, DAWN M.
 MENTELE, CARRIE
 MENTELE, WESLEY
 MESSMER, SHIRLEY
 MESSMER, STEVE
 MEUCHEL, NICOLE
 MEYER, KYNA
 MEYER, JOSHUA
 MEYERS, LACEY R
 MICHAELIS, MIKE

MICKELSON, BARBARA
 MID-AMERICA
 PROPERTIES
 MILLER, DAVID E.
 MILLER, JAMES
 MILLER, MICAH
 MILLER, TRISH
 MILLER, FRANK W.
 MILLER, TONYA
 MILLER, RACHEL
 MILLER, JULIE
 MILLER, BILLIE J.
 MILLS, WILLIAM R.
 MINER, LORRIE A.
 MISCHEL, BETTY
 MISTEREK, JOSEPH P.
 MOEN, RICHARD
 MOLER, JACKLYN A.
 MOLER, ANTHONY J.
 MOLLMAN, SARA
 MOLTZEN, KENDRA
 MORNING, TERESA
 MOOK, CHRISTIAN
 MOOK, VERONICA
 MOORE, RAY
 MORBEN, JERRY W.
 MORBEN, JULIE W.
 MOREHOUSE, JAMIE
 MORGAN, DERIC
 MORRELL, CHUCK
 MORRIS, WILLIAM R.
 MORRIS, KATHY
 MORRIS, TONYA
 MORRIS, BERNARD J.
 MORRIS, CHERIE A.
 MORTON, LINETTE
 MOSBRUCKER, JOE P.
 MOSTAD, RENAE
 MRS IMPORTS INC.
 MUNDELL, DONNA
 NAGEL, BARBARA A.
 NAGEL, JULIE
 NAPTON, AMY
 NEIBAUER, STEVEN R.
 NEIDHARDT, LARRY
 NELSON, LEONARD R.
 NELSON, KEITH N.
 NELSON, JUDITH A.
 NELSON, WILDA LU
 NERMoe, BRANDON
 NEUBAUER, JON
 NEVINS, MICHAEL J.
 NEVINS, NANCY JO
 NGUYEN, LUONG T.
 NIAZ, SHIREEN F.
 NIAZ, FAIZ E.
 NIELSEN, JADE
 NITSCHKE, LARS
 NJOS, BRYAN
 NOEL, JAMES A.
 NOISY HAWK,
 KIBERLY ANN
 NOLZ, SHERWIN
 NORRIS, HENRY STEVEN
 NORRIS, PENELOPE ANN
 NYGARD, LINDA
 NYHUS, DAVID
 O&T ENTERPRIZES,
 OFLANAGAN, RYAN
 OFLANAGAN, DANETE
 OHLHAUSER, ROGER
 OHLHAUSER, TERRY
 OLDELK, LAVERN
 OLESEN, PATRICIA A.
 OLSON, JOAN H.
 OLSON, GRAYCE E.
 OLSON, GERALD
 OMSBERG, RONNIE L.
 OMSBERG, KAREN D.
 O'NEILL, BERNARD J.
 O'NEILL, BRENDA N.
 ONSTAD, JOAN B.

OPP, TRINITY
 OPP, GWEN
 OSMANCEVIC, JASMINA
 OSMANCEVIC, SEAD
 OVERLIE, CHADLEY
 PAHLKE, JIM
 PALENSKY, TERRY
 PATEL, DINA
 PATEL, NIKUNJ
 PATTERSON, ADAM
 PATTERSON, LORA
 PAUL, SCOTT J.
 PAUL, DUSTAN
 PAYNE, BEN
 PAYNE, MARIA
 PEDERSON, ROGER L.
 PEDERSON, WAYNE A.
 PEDERSON, SALLY
 PEDERSON, DEBORAH D.
 PEDERSON, THERESA L.
 PELISHEK, MARY L.
 PEREZ, CARY A.
 PEREZ, DENA L.
 PERFECTION PLUS
 AUTO DETAILING
 PERKINS, MELISSA ANN
 PERRY, JACKIE
 PERRY, CRAIG
 PET CONNECTION
 HUMAN SOCIETY
 PETERSEN, CAROL R.
 PETERSEN, SHAWNNA
 PETERSEN, BEN
 PETERSON, LILLIAN R.
 PETERSON, CHAD A.
 PETERSON, MARK
 PETERSON, CHARLES
 PETERSON, STEPHANIE
 PETERSON, LINDA M.
 PETRYSZYN, HEIDI
 PETRYSZYN, KAREN
 PETZ, PETER
 PFAFF, PAMELA
 PFAFF, DOUGLAS
 PFENNIG, GREGORY DALE
 PFENNIG, BECKY JO
 PIATZ, JEANNINE
 PICKELL, KAREN
 PIERSON, STACY
 PLATERO, VICKIE
 PLEDGER, PENNY
 POINTS AT-HIM, TONIA
 POIRIER, PIERRE
 POLAR WARE COMPANY
 PONGA, GENE L.
 PONGA, DIANE M
 POWER, ROBERT
 PRAIRIE PINES APTS.
 PRESSER, JENNIFER
 PRINZ, LEONARD
 PRIVRATSKY, NADINE
 PRO RADIO
 PUSC, STEVE W.
 QUAST, ROSE C.
 RADSPINNER, RICHARD E.
 RADSPINNER, IRENE R.
 RADWAY, SHAWN
 RAMOS, CARL
 RAMOS, JULIE I.
 RATH, MICHAEL J.
 RATH, JANELL
 RECKOW, KARI T.
 RED TOMAHAWK,
 CHARITY
 RED TOMAHAWK, VERLE
 REICH, BRENT
 REINHART, GARRY C.
 REINHART, SHANE N.
 REIS, J.J.
 REISWIG-ZIEGLER,
 LYNNETTE
 RENNER, ELLEN K.
 RENNER, CHAD
 RENNER, JAYME
 RETTIG, PAM
 REXINE, JOEY L.
 REXINE, CHRISTINA
 RHONE, LYLE
 RICHTER, LISA M.
 RICHTER, KRISTIN
 RICHTER, JASON M.
 RICKE, ARTHUR G.
 RICKE, SHIRLEY M.
 RIEDERER, DEAN
 RIEPL, AMBER R.
 RIPPLINGER, THEODORE
 RIPPLINGER, MARION
 ROBERSON, KATHERINE A.
 ROBERTSON, BRUCE W.
 ROBERTSON, IZZY
 ROBIDOU, KATHLEEN
 ROBINSON, DEAN
 ROBINSON, BRIAN D.
 ROCCO, CHAS
 ROEHRICH, STEVE C.
 ROHR, ELIZABETH
 ROHRIG, BOB
 ROHWELLER, JANESSA
 ROSE, LARRY L.
 ROSENBERG, JENINE
 ROSS, DAUBY K.
 ROTH, PAULINE
 ROTH, GENE
 ROTH, LONNY
 ROTH, JAN
 ROTT, ESTHER
 ROUND, DEAN
 RUGGLES, MELISSA K.
 RUIZ, ROBERT A.
 RUTSCHKE, DONALD
 RUTSCHKE, DENISE
 RYAN, MELISA M.
 SABO, JULIE
 SABO, ROBERT
 SACKMAN, MARGRET
 SACKMAN III, JOHN
 SAHR, JEFFREY J.
 SAHR, DAWN
 SAILER, ANDREW
 SALZER, VINCE
 SAMARZJA, SCOTT J.
 SAMARZJA, JENNY M.
 SANDBERG, LAURA
 SANDERS, JESSICA
 SASSE, ALAN D.
 SATTLER, JOSH
 SAUNDERS, MISSY
 SAYLER, JAMES R.
 SCHAF, EILEEN
 SCHAFER, SHIRLEY
 SCHAFER, ROBERT A.
 SCHAFER, NORMAN
 SCHAFER, GARY L.
 SCHAFER, CARMELLA
 SCHAFF, MONTY
 SCHAFF, LYNETTE
 SCHAFFER, ESTHER V.
 SCHAFFER, ROBERT J.
 SCHATZ, MARGARET
 SCHENCK, ONDRIA
 SCHERER, STEFFAN J.
 SCHERER, LISA G.
 SCHERR, KRIS
 SCHERR, DAVID
 SCHILLING, SCOTT
 SCHLOSSER, CHAD
 SCHMID, BLANCHE
 SCHMID, MICHAEL J.
 SCHMIDT, ALBON
 SCHMIDT, KATHY
 SCHMIDT, LESLIE
 SCHMIDT, THERESE
 SCHMIDT, JEAN M.
 SCHMIDT, ANDREW F.
 SCHMIDT, WESLEY R.
 SCHMIDT, NICOLE L.
 SCHMIDT, JENNIFER
 SCHMITCKE, MYRON
 SCHMITCKE, DANA
 SCHNEIDER, LEO
 SCHNEIDER, SHELLY L.
 SCHNELLBACH, KRAIG
 SCHUH, KYLEE
 SCHUH, TERRELL
 SCHULER, COURTNEY
 SCHULTZ, JOYCE
 SCHULTZ, KEITH J.
 SCHULTZ, LARRY
 SCHULTZ, MYLINDA R.
 SCHULZ, TIMOTHY M.
 SCHULZ, LYNNETTE M.
 SCHUMACHER, LORETTA
 SCHUMACHER, AMY
 SCHUMACHER, THERESA
 SCHWARTZ, SHIRLEY
 SCHWARTZ, CAROLE A.
 SCHWARTZ, BETTY J.
 SCHWARTZ, KIRK
 SCHWARTZ, MICHAEL L.
 SCHWEITZER, KARSTEN
 SCHWINDT, JERRY J.
 SEELYE, DOROTHY
 SELPH, SHELLEY S.
 SENER, JAMES M.
 SENER, RITA A.
 SENER, BEVERLY
 SENER, LARRY
 SEVERSON, JAYNE
 SHAW, BRENDA DENISE
 SHERGILL, RAVI
 SHERMAN, MARVIN
 SHKOR, MATT
 SHROYER, TRAVIS
 SHSREE JI INC.
 SIBLA, STACEY
 SILK, RHIANNON
 SIMENSON, CARRIE
 SIMMONS, STEVE
 SKARPHOL, TIMOTHY D.
 SKIPLE, STEVE
 SKOOG, VICTORIA A.
 SLETTEN, KATHLEN C.
 SLETTEN, DOUGLAS D.
 SMITH, KELLY
 SMITH, JEREMY
 SMITH, WENDY
 SMITH, NICOLE
 SMITHERMAN, CANDICE L.
 SNACK MASTER
 SNIDER, MARK
 SOLHEIM, ANDY
 SOLSETH, MARGUERITE
 SORLIE, GLENN W.
 SPARLING, JERRY L.
 SPARLING, ANNE O.
 SPOER, CHRISTIAN
 SPOER, MELISSA
 SPRECHER, VICTOR
 SPRECHER, BETTY
 SPRINGER, PAUL V.
 ST PETER, DOMINIC
 STAAB, CHRISTINE
 STAAB, ROGER
 STATE FARM INSURANCE
 STEARNS, GERALDYNE L.
 STECKLER, COREY E.
 STEIDL, CANDI
 STEIN, JILL
 STEIN, DAR
 STEINMETZ, KACY
 STEINMETZ, DANNY
 STELTER, BARBARA
 STOCK, JEFFREY D.
 STRAMER, THERESA M.
 STRAND, SANDRA
 STRAND, WADE
 STRIKES THE ENEMY,
 BARBARA
 STRODE, DOREEN
 SUNDAHL, BRUCE B.
 SUNDBERG, ELIZABETH
 SVIHOVEC, IRENE
 SWANSON, JANELLE
 SWENSON, MELANIE
 SYVERSON, CRYSTAL
 SZUDERA, COREEN
 TANK, DENNIS D.
 TANK, CHARLENE M.
 TATRO, MARGARET V.
 TAYLOR, GREG S.
 TAYLOR, WAYNE D.
 TAYLOR, MARGIE
 TEBELIUS, KARL
 TECH, JODIE R.
 TECH, TEENA
 TERNES, TROY
 TESKE, MELINDA
 TESKE, TOM
 THE RIBBI CO & THE
 ELJIM CO.
 THEIL, LACEY R.
 THEIL, G. CHAD
 THIEL, TIMOTHY
 THIELE, MARJORIE
 THIEM, JACKI
 THOMPSON, RONALD
 THOMPSON, STACY
 THURN, COLLEEN
 TIDD, KELLY
 TISCHMAK, MICHAEL
 TITUS, JESSICA M.
 TOMEK, THOMAS J.
 TOMEK, SYLVIA K.
 TONNESON, JON
 TORRALBA, MARINA C.
 TORRALBA, VERNON C.
 TOSSETH, JUDITH A.
 TOSSETH, RUSSELL A.
 TOWN, LYNDA
 TRACY, LAUREN
 TREIB, FRANK
 TRIEB, BARBARA
 TRIEBWASSER, DELVIN
 TRIEBWASSER, KAREN
 TRIELOFF, RACHELLE
 TRIELOFF, TOM
 TROTTIER,
 MARTHA LILIANA
 TTIMW TRUCKING,
 UNDERDAHL, DANIELLE L.
 UNTERSEHER, JUNE
 UPTON, BRUCE G.
 UPTON, JULIANNE K.
 USDA RURAL
 DEVELOPMENT
 VALLEY HONEY LLC
 VAN HORN, KAJA
 VANDEBERG, STEPHANIE
 VANDEBERG, BRIAN
 VANVALENBURG, DAISY R.
 VASSAU, CHARLOTTE
 VENHUIZEN, JULIE
 VERHOEVEN, GENE
 VETTER, DONALD
 VETTER, THERESA
 VETTER, GEORGIA A.
 VIVIER, MAIDA C
 VOEGELE, COREY
 VOLLMER, JENNIFER
 VOLLMUTH, BETH A.
 VOLLMUTH, DANA
 VOTH, JULIET
 VOTH, MATTHEW
 VW'S R US
 WACHTEL, KEITH
 WAGNER, CLARA
 WALFORD, BRIAN R.
 WALLUM, DAWN
 WALRATH, JANE
 WALSH, HEATHER
 WALSH, GERALD J.
 WALTER, DYLAN
 WALTER, AIMEE
 WALTER, DRAY D.
 WALTER, KRISTIN
 WALTERS, TAMMY
 WANGLER, TARA
 WANGLER, CHAD
 WANNER, JOHN F.
 WANNER, MARLA JANE
 WANNER, DEAN R.
 WANNER, RUSS
 WANNER, TRACY M.
 WARD, ROY
 WARD, JONATHAN D.
 WARREN, GWENDOLYN
 WATSON, MARK D.
 WATTS, KENNETH
 WATTS, AMY
 WEBB, MIKE
 WEISS, EARL J.
 WELLS, JAMES
 WELSCH, SHELLEY
 WELTZ CONSTRUCTION,
 WERBELOW, STESSA
 WERRE, RAE ANN
 WERY, AMY
 WHIPPLE, STEVEN
 WHIPPLE, KIMBERLY
 WHITE EYES, LUCY
 WHITE HORSE, MELISSA
 WILKENS, SCOTT
 WILKENS, MIRANDA
 WILKINSON, SHEILA
 WILKINSON, AUDRA
 WILLIAMS, THOMAS D.
 WILLIAMS, LOTTIE M.
 WILLS, BETTY LOU
 WILSON, DEAN R.
 WILSON, MIKE
 WILSON, CHENOA
 WINBAUER, JOE
 WINDSHIELD
 EXPRESS INC.
 WINGERTER, SUSAN
 WININGER, KATHY
 WINKLER, NORMAN R.
 WINKLER, TODD
 WINTERBERG, HEATHER
 WITTMIER, JULIE
 WOEHL, MELODY
 WOLF, JOANNE H.
 WOLFE, GEORGE
 WOLFF, TERRI L.
 WOLFGRAM, NORMA
 WOOD, BRADLEY
 WOODCOX, BONNIE
 WOODWORTH, VIRGINIA
 WWC HOLDING CO. INC.
 YANKTON, RHONDA R.
 YELLOW BIRD, STEPHANIE
 YOUNG, STACEY
 ZELLER, IRENE
 ZENT, MARY
 ZENTNER, CODY
 ZENTZ, MALINDA J.
 ZIEGLER, RICK
 ZIEGLER, THELMA
 ZINIEL, HEIDI
 ZINNEL, DAVID H.
 ZINS, LEO
 ZOTTNICK, RYAN
 ZUCK, JOSEPH A. ☺

The regular meeting of the board of directors of Capital Electric Cooperative was held on Thursday, April 23, at SRT Communications, 3615 N. Broadway, Minot. All directors were present.

Also present were: Manager Paul Fitterer, Business Manager Luke Steen, Operations Manager Jeff Holzer, Engineering Services Manager Greg Owen, Energy Services Manager Josh Schaffner (remote), Manager of Communications Wes Engbrecht (remote), Manager of IT Kent Kensmoe (remote) and Attorney Zachary Pelham of Pearce Durick PLLC, who acted as recording secretary.

Financial Review: Prior to the board meeting, Directors Dwight Wrangham and Bret Weiland reviewed the March check register and expenditures. They advised all checks and expenditures were in order. The financial review was approved.

Management Reports (Business Department, Operations Department, Engineering Services, Energy Services and Communications/IT):

Business Department Report: Steen presented the March financial and statistical report to the board.

Revenue was ahead of budget for March, as \$4,242,716 was generated in comparison with the budgeted figure of \$4,034,310 (favorable variance of \$208,405 or 5.2%).

Capital Electric's March power costs were over budget for the month by 9%.

The operating margin for March was \$235,323.47, slightly behind the budgeted amount of \$235,721.01. The total margin for March was \$274,132, which was behind the budgeted amount of \$316,216.98.

Capital Electric began billing 27 new services in March, bringing our active services to 22,977 versus 22,539 at this time last year, or a net increase of 438 accounts over the last 12 months.

The cash flow statement was reviewed.

Estate Retirements: Following review of the financial condition of the cooperative and recommendation by management, authorization was made for payment of capital credits to five member estates, totaling \$4,028.27.

Quarterly Write-offs: Following review of bad debts, approval to write off \$3,655.92 was approved.

Operation Round Up Agreed Upon Procedures: After discussion, it was approved to accept the independent accountant's report on applying agreed upon procedures for Operation Round Up.

Federated Insurance Coverage: After discussion, it was moved to increase policy coverage amounts for umbrella coverage and environmental coverage.

Operations Report: Holzer reviewed the written report from the operations department. Holzer reported on retirement of one-and-a-half miles of overhead single-phase line in the McKenzie area,

retirement of Topps Café service in Sterling to allow for a parking lot expansion and completion of monthly substation checks.

Safety Report: There were no lost-time accidents since the last board meeting. The North Dakota Association of Rural Electric Cooperatives (NDAREC) safety instructor held a safety meeting covering mayday procedures and pole-top rescue. The safety report was reviewed.

Engineering Services Report: Owen reviewed the written report from engineering services. Seven work orders were completed in March. Owen reported on ongoing and upcoming projects, including preparation to service University of Mary's new dormitory, replacement of a faulted underground service line and update on the Federal Emergency Management Agency application.

2027-30 Construction Work Plan: After discussion, approval was made to adopt the construction work plan as presented.

Township Franchise Agreements: Owen reviewed proposed franchise agreements and following discussion, authorization was made to enter into franchise agreements with Christiana, Schrunk and Steiber townships.

Energy Services: Schaffner reviewed the energy services report. Schaffner reported on continued engagement with members on calls related to rate increases, presenting as a teacher at the Energy Audit Training for the National Rural Electric Cooperative Association and update on proposals for 900-kilowatt BESS system.

Communications: Engbrecht reviewed the communications and public relations report. Engbrecht reported on the Nominating Committee receiving six candidates for board of directors, details on the annual meeting new location efforts and general outreach in the community.

IT Report: Kensmoe reviewed the IT report. Kensmoe reported on replacement PC/laptops, noted increased demand for hardware components for data centers resulting in increased prices and update on security threats.

Cost Savings Ideas: Fitterer reviewed materials for anticipated implementation in 2027.

Policy II-05 Work Apparel: Steen reviewed proposed inflationary related adjustments and no action was taken to allow for staff to address questions at the May board meeting.

Basin Electric Power Cooperative: Fitterer reported on Basin Electric matters.

Central Power Electric Cooperative: Dave Charles reviewed Central Power Electric's March board meeting and annual meeting.

Industry Update: Fitterer reviewed materials related to power markets and general cooperative news.

NDAREC: Vilhauer reviewed NDAREC matters.

NRECA: Fitterer reported on the Legislative Conference. ☺

CAPITAL ELECTRIC COOPERATIVE

7401 Yukon Drive, Bismarck, ND 58503

Website: capitalelec.com

BOARD OF DIRECTORS:

Deon Vilhauer, Pres.	Bismarck
Sara Vollmer, V. Pres.	Wing
Kyle Tschosik, Sec.-Treas.	Bismarck
Greg Dehne, Asst. Sec.-Treas.	Bismarck
Dwight Wrangham.....	Lincoln
Bret Weiland.....	Bismarck
Dave Charles.....	Bismarck
Whitford Dwyer.....	Bismarck
Luke Ellenbaum.....	Bismarck

OFFICE HOURS:

Monday-Friday : 8 a.m.-4 p.m.

Phone: 855-937-1736

DAY-NIGHT-WEEKEND

TROUBLE CALL: 701-223-1513

Capital Electric Cooperative is an equal opportunity provider and employer.

A Touchstone Energy® Cooperative 